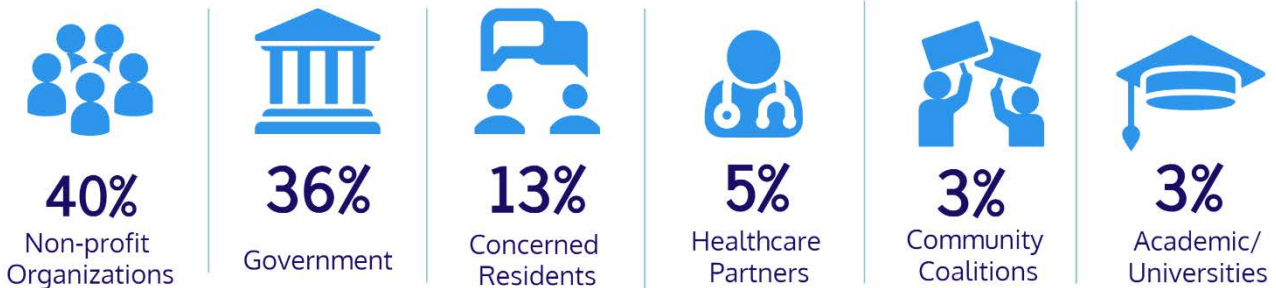


Event Summary
January 16, 2018

Los Angeles County Center for Health Equity
**Community Listening Session:
South Bay**

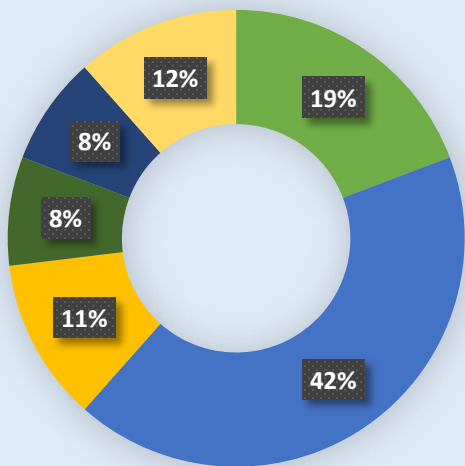
The Center for Health Equity is an LA County Health Agency initiative led by the Department of Public Health. Our work is to ensure that everyone in LA County has the opportunities and resources needed for optimal health and well-being. As a first step, the Center hosted listening sessions across the county. The sessions invited community partners and local community members to share their input, which will help shape the Center’s work. This summary reflects the feedback gathered during the session hosted in the city of Long Beach, where 102 people attended.

Who participated in this session?

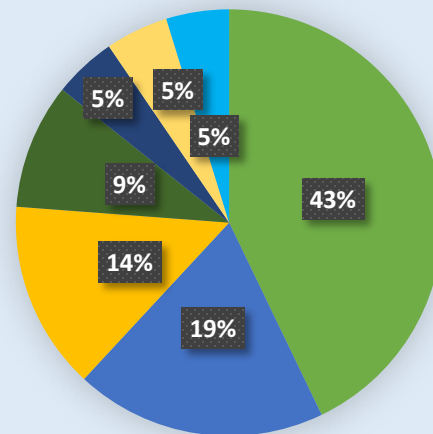


Most valuable part of the Listening Session

- Group breakout session
- Hearing concerns, naratives & ideas
- Learning about the Center
- Networking opportunities
- Participant diversity
- Presentation/Draft Documents



What can we do better?



- More outreach to community
- More time for networking
- Better venue
- Limit discussion topics
- CHE action items
- Information on future sessions
- Provide translation services

Community Voices:

What would make future sessions better?

- “Allow space for community members to speak about the issues important to them (aka: a listening session, not a workshop session).”
- “Better and bigger venue with more parking.”
- “Getting the people and organizations that don’t believe in this movement here to get their buy in.”
- “Meet in spaces for community members like a community center. Provide listening sessions with cultural community members.”
- “Hold a separate session based on race and at a community venue.”
- “Make sure disabilities are an umbrella through all columns of social determinants of health, such as racism/discrimination.”



Top Insights from the Gallery Walk

Attendees offered feedback on poster-sized versions of draft data briefs on the Center’s five key initiatives— infant mortality, environmental justice, sexually transmitted infections, Health Neighborhoods, and cultural and linguistic competency. Six key insights were identified:



Hold those in power accountable

Too often those with power are able to avoid responsibility for their actions; improve current oversight and regulation to hold companies accountable for harming the community



Share decision-making power with the community

Support communities to define and measure adverse health conditions, with equal access to decision-making; share community successes with the community; leverage best practices for greater impact.



Continue open discussion backed by race history & science

Continue to address structural racism, trauma and stress; further address intersectionality and cross-sectional nature of racism today; highlight that racism is a daily part of people’s lives and affects health outcomes.



Promote just investments for communities

Ensure investment in those that are doing the work, like *promotoras* and community workers; invest in communities of color, and support black mothers and their babies.



Leadership should reflect the community

Hire staff that represent the community; those who have been impacted by the issues should be leading the work; establish a cultural humility protocol and guidelines, and train providers in cultural humility practices.



Use data to address gaps and needs in the community

Clear and concise visuals are important; more interaction is needed, less words; make sure to include trans individuals in data sets; work towards better disease surveillance for communities of color.

Top Needs Identified from Small Group Discussions

Attendees broke up into small groups to discuss how the Center could best support the community's efforts to build health equity. The following needs emerged during these discussions.



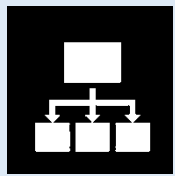
Learn how people define their own narrative and identities

Build power in communities to create their own health through policy and systems changes; create a space for self-identification for people across all spectrums; build inclusiveness for communities of color.



Engage in meaningful community engagement & mobilization

Work to build trust; listen to community members in their spaces like churches and schools; identify community champions; contract with and pay trusted partners to do engagement work.



Connect marginalized communities to decision-makers

Provide training and build capacity for communities to navigate complex policy systems; bring diverse disciplines together.



Focus on workforce development

Train current County workforce, line staff, management, providers; embrace discomfort; find ways to train and employ community members.

Who else would participants like the Center to engage ?

- AIDS Food Store
- American/Indian/Alaska Native communities
- Black Women for Wellness
- Black Infant Health contractors
- Building Healthy Communities - Long Beach
- Cambodian Advocacy Collaborative
- City council members
- Community organizations
- Community coordinating councils
- Collaborative care model, such as the AIMS (Advancing Integrated Mental Health Solutions) Center
- Department of Labor
- Department of Justice
- Faith-based organizations
- LGBTQ centers to improve communities of MSM, trans and queer care services
- Long Beach Language Access Coalition
- Mama's Neighborhood Program
- Mothers Against Drunk Driving
- Moving Forward Network
- School bilingual parent groups
- Trauma Prevention Initiative (TPI) communities, such as Willowbrook, Florence-Firestone and unincorporated Compton
- Urban planning groups that are working on gentrification
- Youth and family centers such as YMCA and Boys & Girls Clubs

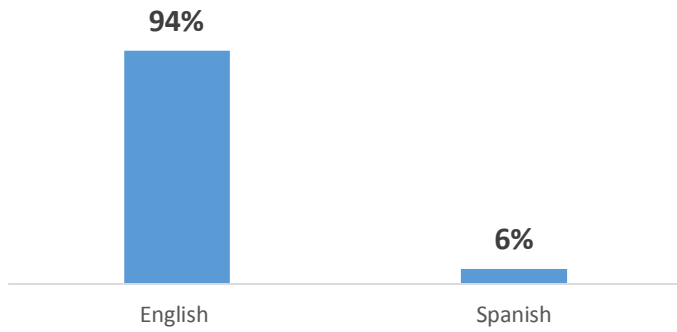
How will the information be used?

The community listening sessions are only the beginning. Your enthusiasm and commitment to health equity truly reflects the vision of communities taking the lead in identifying and advocating for their health and well-being. We will:

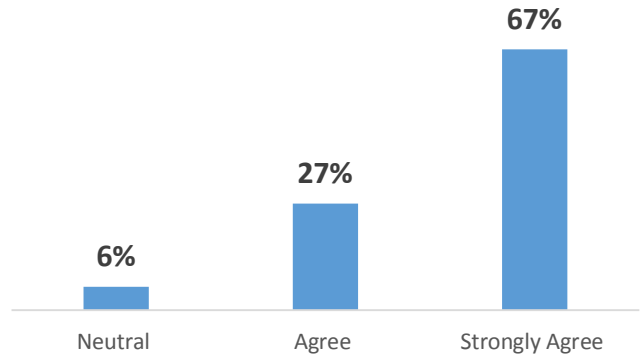
- Revise data briefs according to the key insights;
- Create inventories of best practices, coalitions, communications and other strategic efforts;
- Address the top needs to inform the Center's work plan, prioritizing the specific services attendees would like the Center to offer or enhance; and
- Engage recommended key partners.

Graphs and Data Appendix

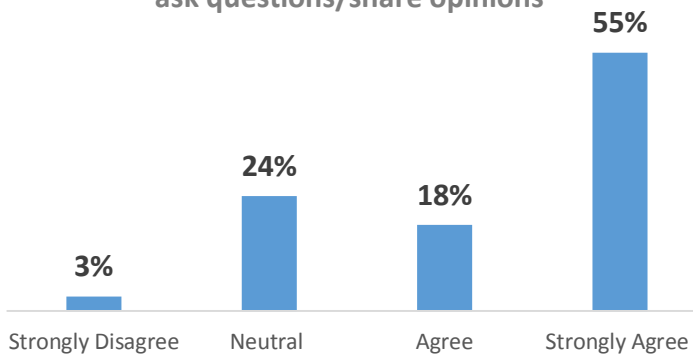
Language of completed surveys



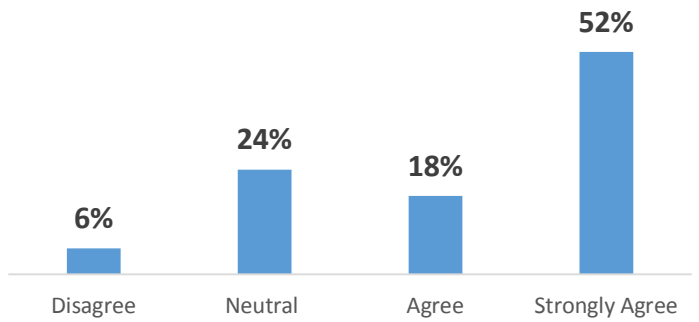
I understand health equity & why it's important



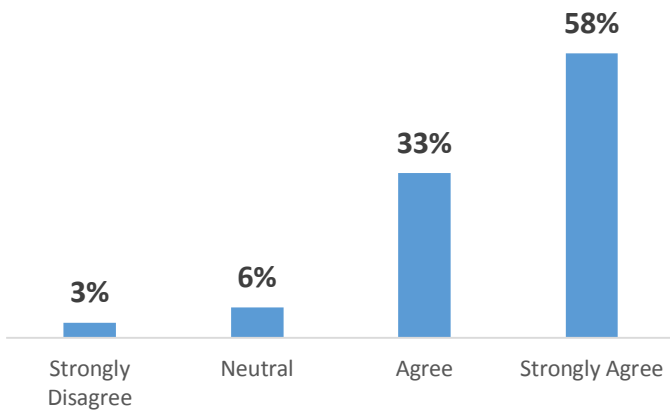
My voice was heard & I had the opportunity to ask questions/share opinions



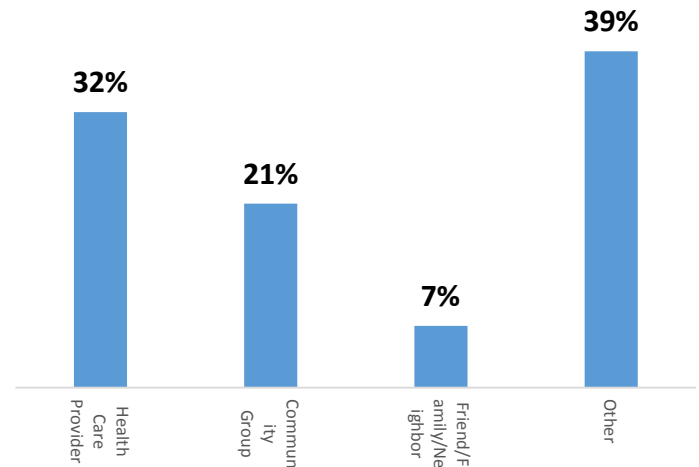
I learned about CHE goals & plans



The listening session was a good use of my time



How I learned of the listening session



Join the Listserv at LACHealthEquity@listserv.ph.lacounty.gov

